

Need a Mortgage in principle
to make offers? Call us now
for quick assistance!
0121 775 0101



Do you need to sell?
Start your journey now!
Call us we can help.
0121 775 0101



SCAN FOR MORE INFO
SIZE - 659 Sq Ft
TENURE - Leasehold with 128 Years Remaining
COUNCIL TAX - Solihull Metropolitan Borough Council - B
BROADBAND - Upload Max 220Mbps
Download Max 1800Mbps
MOBILE - O2
EPC - C - 73
PARKING - On Road
FLOODRISK - Very Low
SERVICES - Mains
COVENANTS - N/A

ROMFORD CLOSE
Sheldon, B26

A delightful first floor maisonette presents an excellent opportunity for first-time buyers and investors alike. With its appealing features and prime location, this property is a must-see for those looking to make a smart investment or find their first home. Offered with no upward chain.

FEATURES

- Offered with No Upward Chain
- Excellent First Time Buyer or Investor Opportunity
- First Floor Maisonette
- Tastefully Presented Throughout
- Bright Lounge with South Facing Balcony
- Fitted Kitchen
- Two Double Bedrooms
- Shower Room
- Leasehold with 128 Years Remaining
- Convenient Location

Are you an investor
interested in expanding your
portfolio?

**Call 0121 775 0101 to provide your
investment criteria for alerts.**



SCAN TO **VIEW OUR**
WEEKLY FILMS &
SUBSCRIBE

Sneak Peeks

Every week, we unveil "Sneak Peeks," a feature showcasing exclusive properties before they hit Rightmove and other platforms.

The Landlord Club

Join our Landlord Club for weekly updates on legislation, market trends, and our Letting Director's 'Investment Pick of the Week' for optimal ROI.

HTSPMD

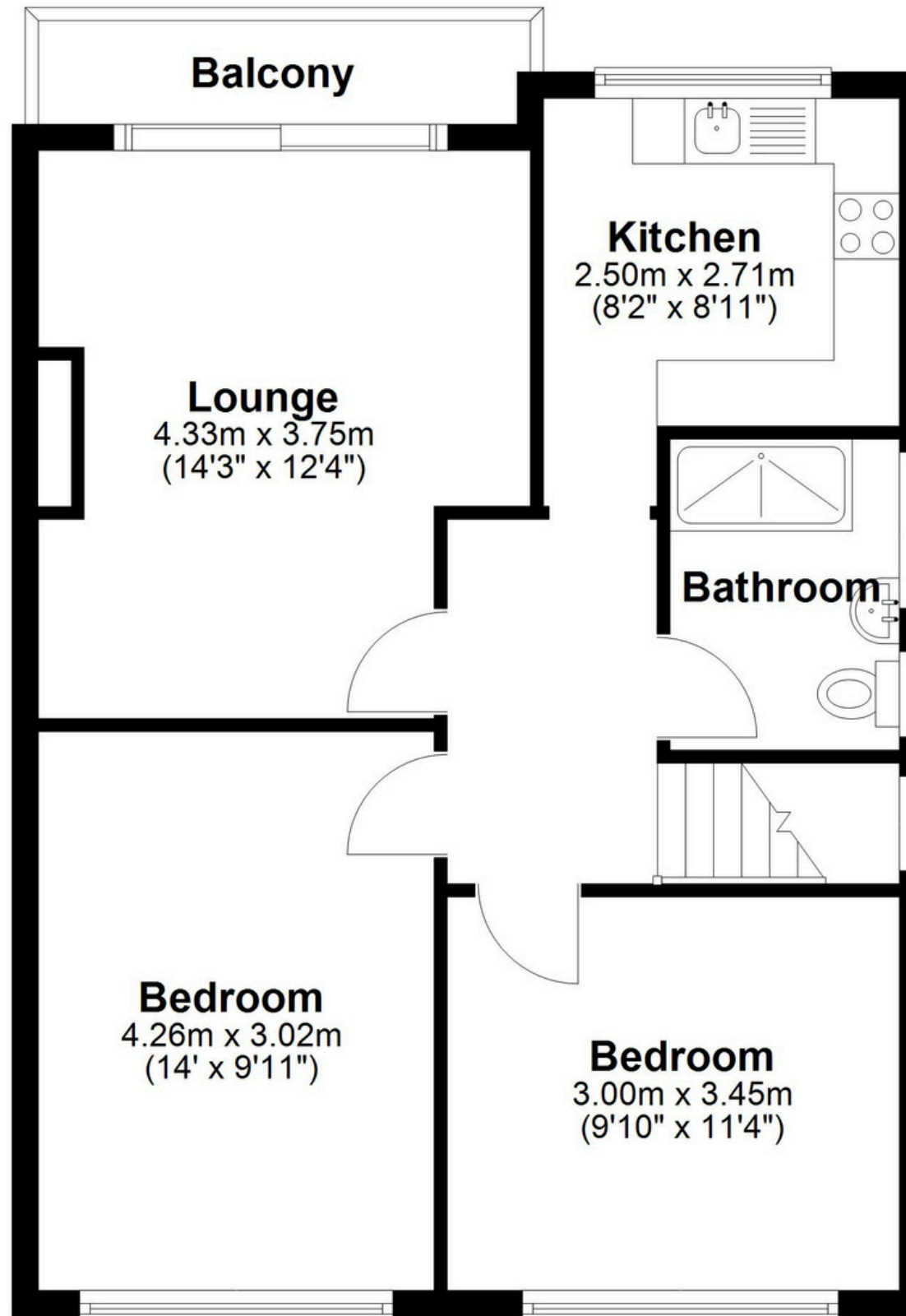
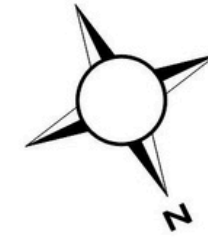
Tune into 'How's The Solihull Property Market Dom' weekly for a quick, insightful snapshot of the market.

The Mortgage Update

Get weekly insights and the best deals with our Mortgage Update, your shortcut to navigating the complex mortgage landscape confidently.

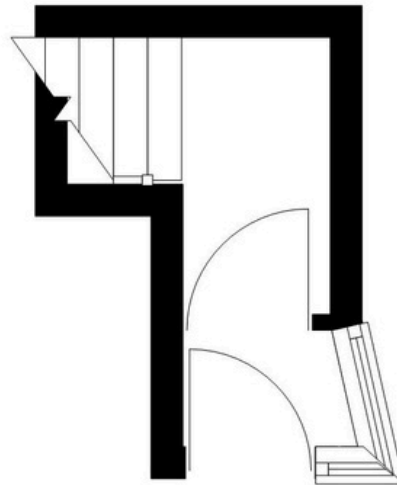
First Floor

Approx. 58.2 sq. metres (626.2 sq. feet)



Ground Floor

Approx. 3.1 sq. metres (33.4 sq. feet)



Total area: approx. 61.3 sq. metres (659.6 sq. feet)

This floor plan is for illustration purposes only, this is not intended to be a measured/scaled survey or comply with RICS guidelines. All measurements (including total floor area) openings, orientation and floor area are approximate. No details are guaranteed, they cannot be relied upon for any purpose and do not form part of any agreement. A party must rely upon its own inspection(s). No responsibility is taken for any error, omission, or mis-statement.

Plan produced using PlanUp.